



# MLB Series

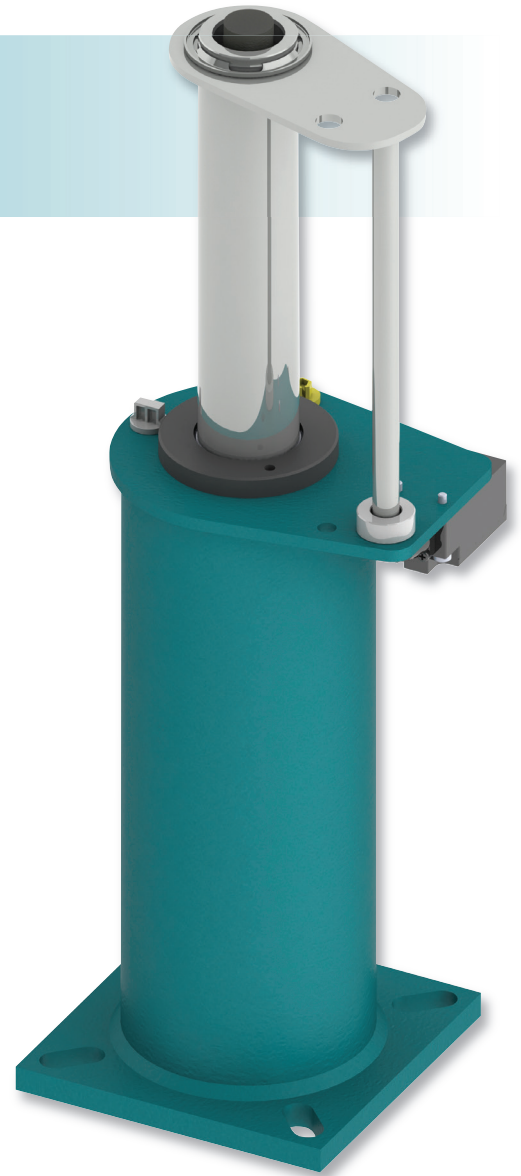
The MLB range of buffers incorporate gas spring technology and provide a premium, robust passenger safety solution for low to medium speed, mid mass elevators.

The MLB buffers are designed and manufactured according to strict engineering principles and are universally approved and globally certified.








Our MLB buffers are smaller and weigh considerably less than many alternatives. Moreover, the MLB13-32 units can be supplied oil filled which reduces the cost of logistics, saves time and reduces the risk of errors during installation.

### Product features

- Energy dissipation buffer
- Minimum G-force experience (increased passenger protection)
- Lowest possible compressed height for specified mass range
- Globally certified to EN81-20/50, ASME17.1, GB7588, EAC, KC
- Fully compliant with lift directive 2014/33/EU
- Wide mass range 450-5500 kg
- Self contained, maintenance free (except statutory inspections) unit
- Gas spring return
- All supporting documentation available online



Model		MLB 13	MLB 16	MLB 18	MLB 20	MLB 25	MLB 32	MLB 35	MLB 40
Rated speed	m/s	1.300	1.600	1.800	2.030	2.540	3.150	3.560	4.060
Impact mass range	kg	450-5500	450-5500	450-5500	450-5500	450-5500	450-5500	600-5500	600-5500

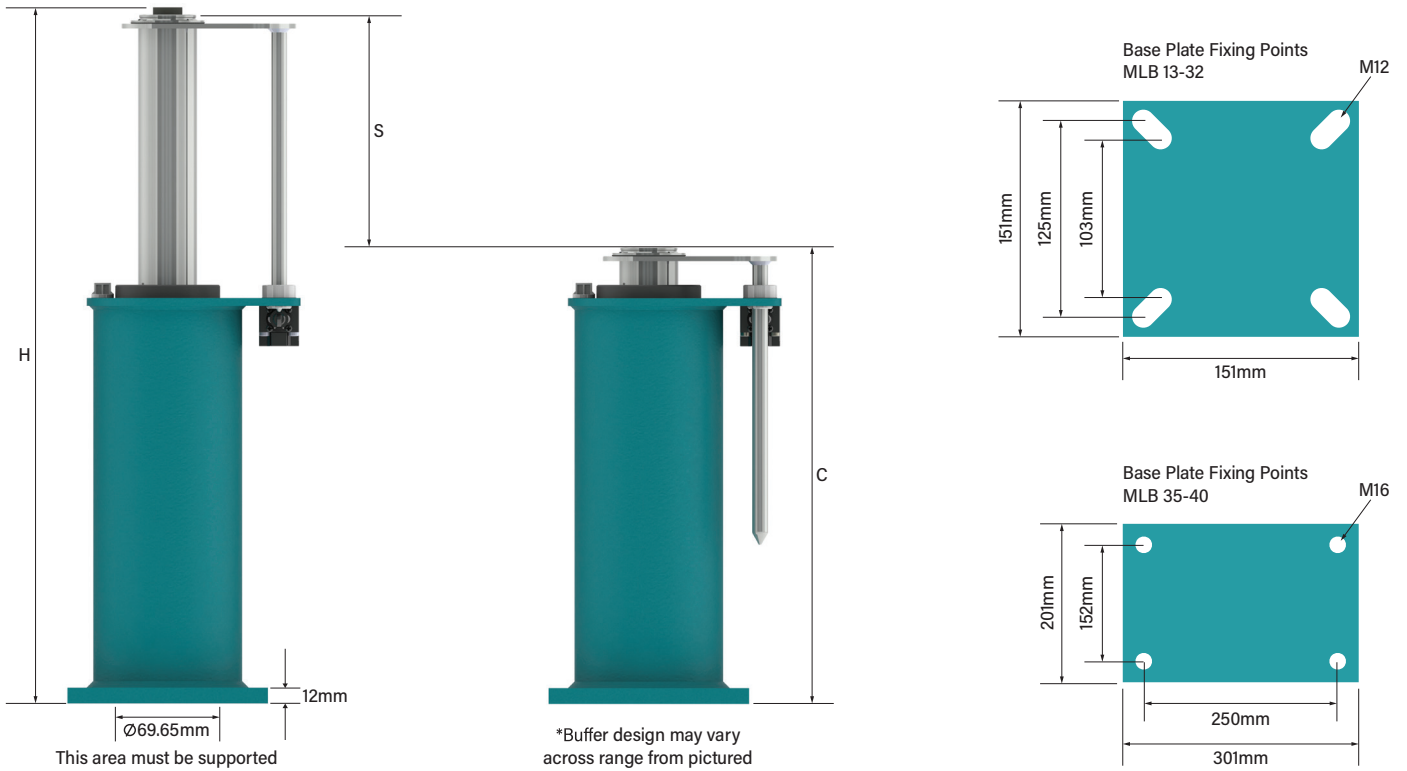
- Passenger

- Express

- Commercial

- Modernisation

- Freight

- Vehicle

- Special Applications




# MLB Series

Model		MLB 13	MLB 16	MLB 18	MLB 20	MLB 25	MLB 32	MLB 35	MLB 40
Stroke 'S' (min.)	m	0.1213	0.1743	0.2203	0.2803	0.4363	0.6803	0.8809	1.1409
Height 'H' max. (extended)**	m	0.4103	0.5323	0.6343	0.7823	1.1643	1.7305	2.1079	2.6929
Height 'C' min. (compressed)**	m	0.2754	0.3444	0.4004	0.4884	0.7144	1.0340	1.2093	1.5343
Weight no oil (dry)	kg	9.281	11.15	12.67	15.02	21.05	29.72	61.45	75.66
Oil volume	Litres	1.02	1.41	1.74	2.18	3.32	5.19	19.50	25.00

\*\*The max and min figures provided take account of the extremes of the tolerance to provide absolute maximum and absolute minimum dimensions.



## Range Overview

